

The Flamco Flexcon PA AutoFill pressurisation assistant is used to monitor heating systems and to assist the installer and end-user with pressure maintenance. The Flexcon PA AutoFill logs and alerts when pressurisation problems occur and assists in (or control) topping-up the heating system to the correct working pressure. It can also advise on expansion vessel life expectancy without disconnecting the vessel and you can configure monitoring on maintenance intervals for third party components. The Flexcon PA AutoFill comes with a smartphone/tablet application for advanced and complete delivery of system status, guided maintenance advice and an automatic filling device for complete automation of topping-up and leak detection of heating systems.



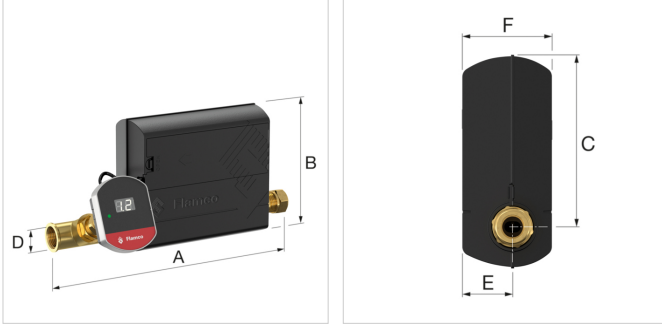
Avantajları

- Eliminates unscheduled service call-outs for nuisance failures caused by pressure loss in the system, increasing comfort for end customers.
- Monitoring of fill pressure, safety valve discharges, expansion vessel end of life span and scheduled maintenance intervals of any components.
- The Flexcon PA AutoFill set includes automatic topping-up and leak detection functionality.
- The mobile app enables end customers to share event logs with their installer for remote support.
- The Flexcon PA AutoFill gives the installer eyes on site to see how the installation's pressurisation is functioning.

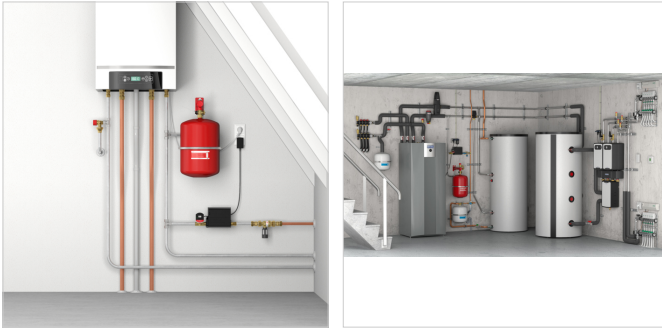
Teknik Özellikler

- Suitable for heating systems with expansion vessels with a system volume up to 40,000 l and for addition of glycol-based anti-freeze up to 50%.
- Can be combined with Flamconnect Remote.
- Power supply: 12V AC/DC adapter.
- Working system temperature: 0 °C / 90 °C.
- Working ambient temperature: 0 °C / 40 °C.
- Working system pressure up to 3.5 bar.
- Flow rate (filling): 0.7 m³ / hour.
- Design pressure: PN 6.

The Flexcon PA AutoFill set includes: Flexcon PA (G ¼" M), AutoFill unit (G ½" M), t-piece (G ½" F), straight coupling (G ½" F), shut-off valve (¼" x ½"), 2x compression nut/ring (15 mm).<->



Tip	Connection (D)	Dimensions					-	Sipariş Kodu
		A [mm]	B [mm]	C [mm]	E [mm]	F [mm]		
Flexcon PA AutoFill	G 1/2" - 15 mm (2x)	263	136	109,5	32	57	1	23761

**Çevrimiçi daha fazla bilgi bul:**[Flexcon PA AutoFill Montaj ve kullanma kılavuzu](#)[Manual for installing new firmware](#)[Frequently asked questions](#)[Declaration of conformity](#)[Brochure Flexcon PA](#)[Leaflet Flexcon PA - Consumer](#)[Leaflet Flexcon PA - Installer](#)[Frequently asked questions](#)[Brochure Flamconnect Remote](#)[Simplified topping-up procedure](#)[Full animation](#)[Prescor IC Fill PA](#)

Normtherm
Enj. Sist. San. Ve Tic. Ltd. Şti.
Gürpınar Mah. Gürpınar Cd.
Abaylar İş Merkezi No:16/10
, Beylikdüzü-İstanbul - tr

T 212 880 01 14
E info@normtherm.com
I www.flamcogroup.com/tr